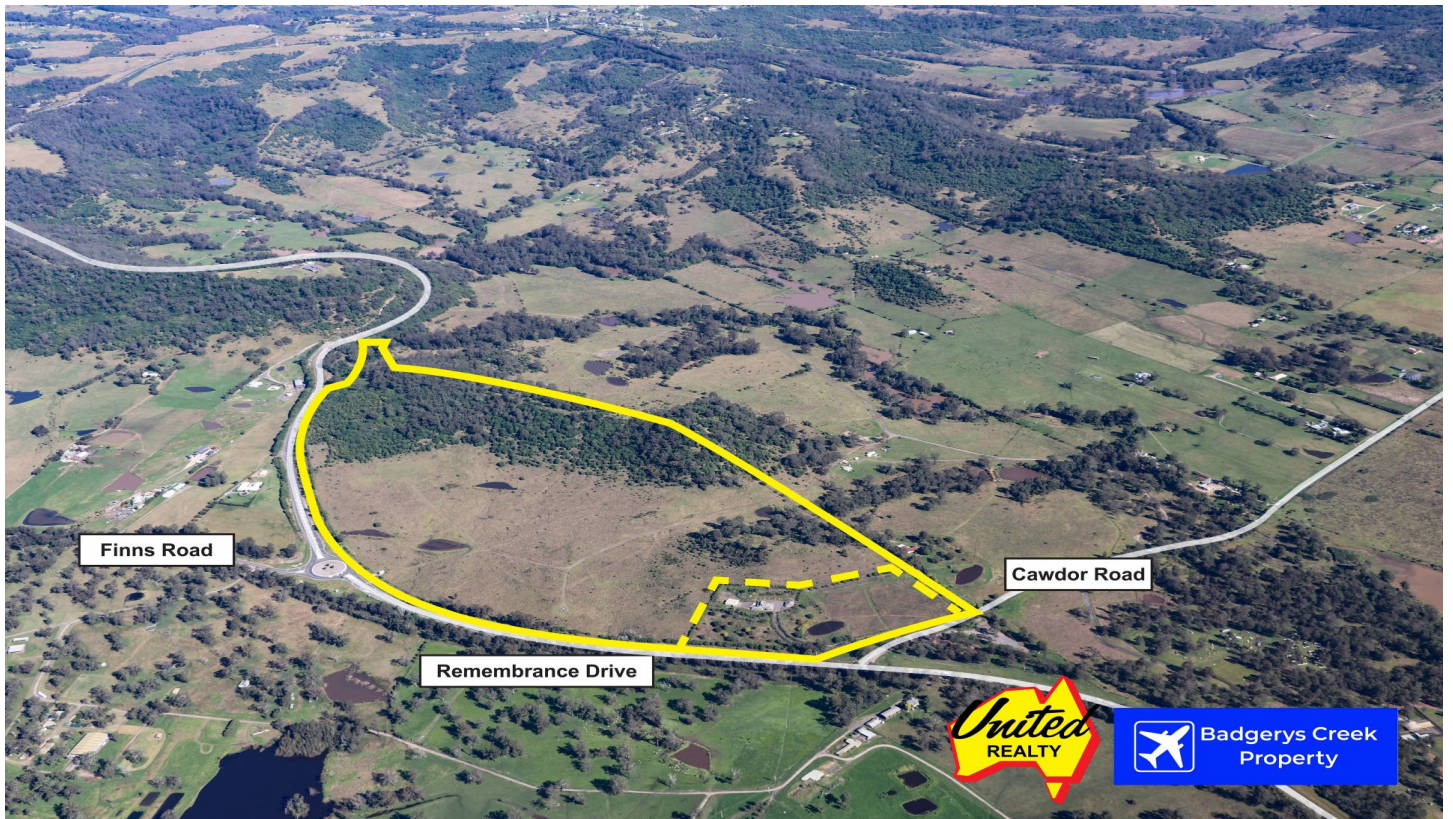




Uniting people with property... since 1986



900 & 950 Cawdor Road Cawdor NSW

4 2 3

Land Size : 49.43 ha

View : <https://www.acreagesales.com.au/7201024>



Charlie Cini
0404018222



Edwin Borg
0418236274



- Comprises two (2) land parcels
- Land area: 112 Acres (45 Ha) and 10 Acres (4 Ha)
- Total land area: 122.14 acres (49.43 Ha)
- Includes quality two (2) storey four (4) bedroom house, 2 bathrooms and multiple living areas. 3 car garage and 3 door barn/shed
- Large road frontage to Remembrance Drive - 1.5 kilometres approx
- There is a lease on the property for gas extraction