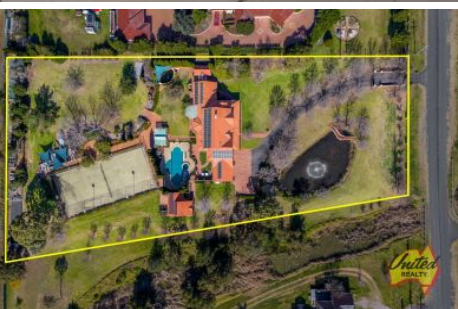




Uniting people with property... since 1986



Denham Court

5 4 4

Land Size : 2.47 Acres

View : <https://www.acreagesales.com.au/5005050>



Edwin Borg
0247748222

First Time Offered - "Summerfield"

Timeless, award-winning home offered for the first time by its original owners, set on immaculate sprawling acres and boasting a championship tennis court, inground gas and solar heated pool, manicured gardens, wine cellar, and so much more.

Located in coveted Denham Court, this delightful two storey home with its striking façade of gables, exudes elegance, with its tree-lined driveway and small dam complete with walkover bridge and feature fountain.

Inside, the home is filled with warm and charm. Downstairs offers a large study, spacious formal living room with open fireplace, adjacent formal dining room, rear family room, plus a separate informal living space with built-in bar.

The sun-filled kitchen and open plan meals area offer the perfect space for relaxed family gatherings. Both overlook the rear gardens; the immaculate kitchen featuring a large breakfast bar, walk-in pantry and an abundance of bench space. Completing downstairs is a powder room, laundry with shower and external access. There is also a dedicated guest wing with its own kitchen, bathroom, combined living/dining plus separate external access.

The first floor of the home has a spacious three way main bathroom plus four well-proportioned bedrooms with built-ins, the grand master featuring a large walk-in robe and over-sized ensuite with dual vanities, shower, plus luxurious sunken spa bath with views over the rear of the property.

Outdoors, new owners will be spoilt for choice when it comes to entertaining. In addition to the three separate outdoor entertaining areas, guests can enjoy the inground pool with wading area and spa, all-weather tennis court with night lights, Koi ponds, private cellar, and parklike grounds.

A once in a lifetime purchase to last a lifetime of happy memories. Inspect today.

Other features

- Approx. 2.47 acres (approx. .99 ha)
- 4 car garage, drive through access
- 2 x separate storage sheds + studio
- Ducted air conditioning
- Ducted vacuum
- Laundry chute
- Approx. 14 kw solar panels
- Security alarms, electric gate
- Timber windows & doors
- Under stairs storage
- Dam with fountain
- Mature citrus

* Please note that all webpage enquiries require a contact number AND an email address. Enquiries that do not have this information will not receive a response.

Photo identification must be presented to the agent by all parties prior to inspections. All care has been taken in providing accurate information in this advertisement. However, prospective purchasers are to rely on their own enquiries.