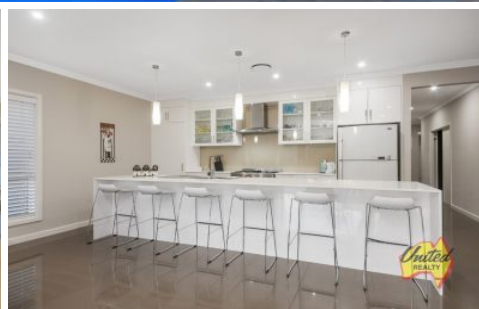




Uniting people with property... since 1986



Cobbitty

5 3 3

Price : \$ 1,380,000

Land Size : 994 sqm

View : <https://www.acreagesales.com.au/4889776>



Edwin Borg
0247748222

Luxe Living in Cobbitty - Secure Now!!!

Live life to the full in this sprawling, five bedroom modern residence with a spacious floor plan and luxe extras discerning buyers will truly appreciate.

Set on an a manicured approx. 994 sq.m block and surrounded by other quality homes in exclusive Kirkham Rise Estate, this appealing property boasts a spacious media room, modern galley style kitchen with full-length breakfast bar, sizeable walk-in pantry and quality appliances. Both the dining and family rooms are open plan and connected for easy living, with convenient access to the outdoors.

All bedrooms are over-sized with walk-in robes or built-ins, fans, and individual ducted air conditioning temperature controls. One bedroom boasts a bonus ensuite, while the light-filled master has 2x walk-in robes plus ensuite with super-sized shower space, double entrance doors and more! A bonus study and upstairs attic with ducted air conditioning and powder room makes for the perfect teen space!

Outdoors offers a modern cabana, inground pool with lighting, and stylish undercover alfresco with privacy screens.

Other features

- Ducted air conditioning
- Ducted vacuum
- Large laundry with external access
- Ample storage
- Alarm system
- Intercom
- Attic access
- Tool shed at rear
- Vegetable gardens
- Landscaped gardens
- Approx. 10,000L underground water tank
- Triple car garage, internal & drive through access
- Off street parking
- Provision for solar/gas/electric pool heating
- Secure parking for boat
- Just minutes to Camden CBD, Cobbitty Village and close to Narellan Town Centre

Photo identification must be presented to the agent by all parties prior to inspections. All care has been taken in providing accurate information in this advertisement. However, prospective purchasers are to rely on their own enquiries.