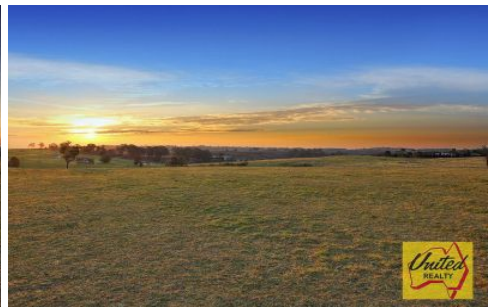




Uniting people with property... since 1986



## Razorback

**Price** : \$ 1,450,000  
**Land Size** : 5.93 ha  
**View** : <https://www.acreagesales.com.au/sale/nsw/southern-highlands/razorback/residential/land/4248127>



**Edwin Borg**  
02 4774 8222



Wonderful opportunity to purchase approximately 14.65 acres (approx. 5.93 Ha) of prime acreage in Razorback! This mainly cleared parcel is fenced with a dam and has several building sites on which to build your dream acreage home (subject to council approval).

Razorback continues to be one of the most popular "go-to" family-orientated acreage suburbs in the Wollondilly - make your move today!

Other features include:

- ? Power to site
- ? Approximately 10km to Picton CBD
- ? Approximately 15.7km to Camden CBD
- ? School bus stop at Remembrance Drive

Photo identification must be presented to the agent by all parties prior to inspections. All care has been taken in providing accurate information in this advertisement. However, prospective purchasers are to rely on their own enquiries.