






Uniting people with property... since 1986



**13/690 Montpelier Drive The Oaks NSW**

**5**  **3**  **3** 

**Price** : \$ 1,400,000

**Land Size** : 2.5 Acres

**View** : <https://www.acreagesales.com.au/3662708>



**Edwin Borg**  
**0247748222**

### Deceased Estate - Must be Sold!

This unique property will suit a large family. Featuring a huge, quality 3 bedroom home plus an approx. 120sq.m granny flat (subject to approval) situated on an approx. 2.47 acre (approx. 1 Ha) high set block with amazing views in an ultra-private and highly sought-after position.

The main house boasts massive bedrooms with built-in robes; plus en-suite, generous walk-in robe and parents retreat to the master suite with double door entry plus access to patio.

Superior inclusions notable in the main open plan and super spacious living and dining areas are; high ceilings, ornate cornices and ceiling roses. The kitchen is large enough to cater for any culinary delight, with a walk-in pantry, and ample bench and cupboard space including an island bench.

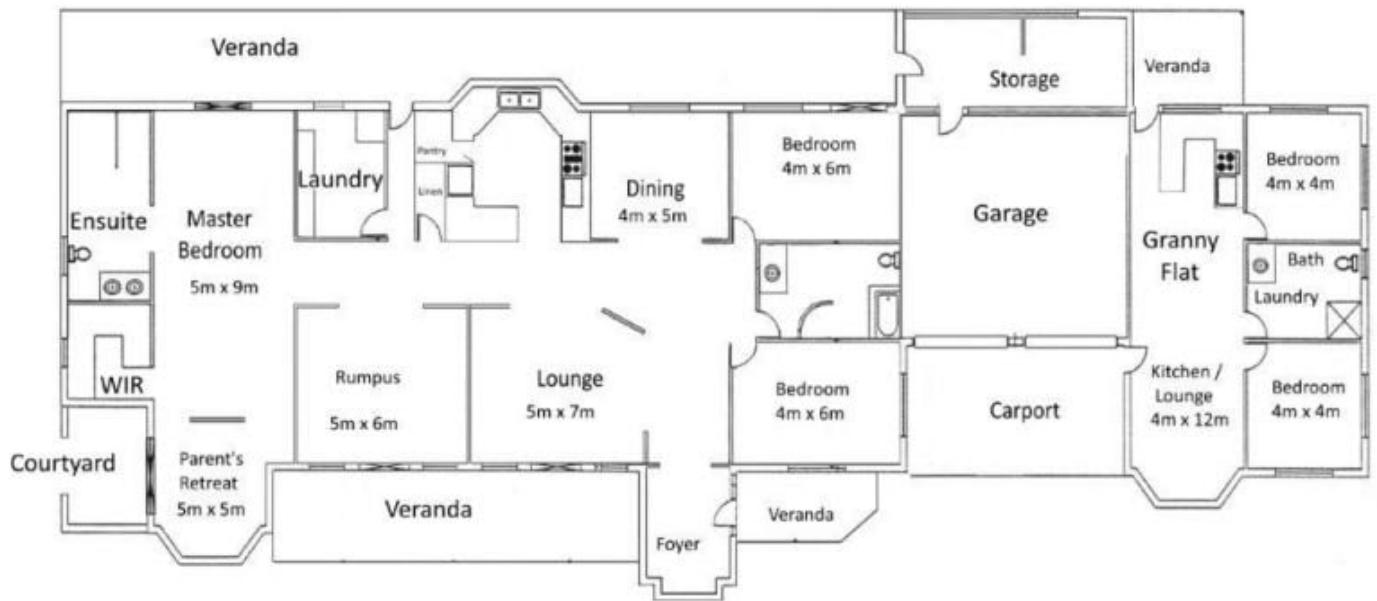
Also boasts rumpus room or huge home office, ducted air conditioning, large main bathroom, great size laundry and big bright windows allowing ample natural light into the home and bringing the outdoors in - and again, those views.

The granny flat (subject to approval) is under the main roof but is separated from the main residence by the triple garage with electric roller doors and 2 workshop areas. The granny flat (subject to approval) includes 2 bedrooms, open plan living and dining area, kitchen, bathroom, ducted air conditioning, veranda, has its own entrance and is very private. Perfect for mum and dad, the in-laws or teenagers.

The American style barn shed completes this property. Be quick!!!

Photo identification must be presented to the agent by all parties prior to inspections. All care has been taken in providing accurate information in this advertisement. However, prospective purchasers are to rely on their own enquiries.

13/690 Montpelier Drive, The Oaks



All measurements are approximate.