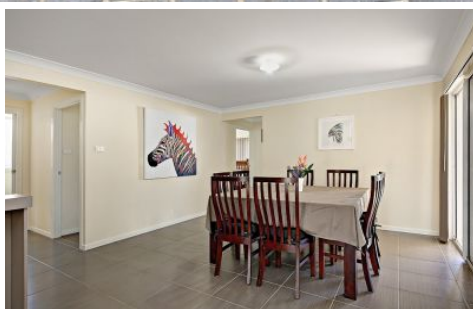







Uniting people with property... since 1986



**36 Rosella Circuit Gregory Hills NSW**

4  2  2 

**Price** : \$ 702,000

**Land Size** : 383 sqm

**View** : <https://www.acreagesales.com.au/3513175>



**Edwin Borg**  
**0418236274**

### Calling All First Home Buyers and Astute Investors

This 2 year young property is priced right and is sure to sell. Situated in a fast growing area close to schools, shops and amenities.

Property consists of:

- 4 good size bedrooms with en-suite and walk-in robe to main
- Large kitchen, living and dining
- Kitchen boasts stone bench tops and quality appliances
- Theatre room
- Ducted air-conditioning
- Double garage
- Approx. 383sq.m block of land

Be sure to attend our Open Home as this one won't disappoint!

Photo identification must be presented to the agent by all parties prior to inspections. All care has been taken in providing accurate information in this advertisement. However, prospect purchasers are to rely on their own enquiries.