



Uniting people with property... since 1986



115 Mount View Close Razorback NSW

8 7 3

Price : Contact Agent
Land Size : 48.65 ha
View : <https://www.acreagesales.com.au/3321864>



Charlie Cini
0404018222

Welcome to this iconic Dutch mansion, nestled in the prestigious suburb of Razorback. Boasting a prime location overlooking the renowned Antill Park Golf Course, this remarkable property spans approximately 120.22 acres (approx. 48.65 ha), and offers immense potential for subdivision (subject to council approval).

The master-built residence is a testament to timeless elegance, constructed with solid sandstone and surrounded by meticulously landscaped gardens and sprawling acres of natural beauty. The exquisite home comprises eight bedrooms, allowing each room to revel in breathtaking panoramic views. The master bedroom is a true sanctuary, featuring an enormous walk-in robe, a dedicated make-up room, and a spacious ensuite.

Upon entry, the grand staircase creates a captivating entrance, leading to the piano room with its double-sided fireplace, or choose to relax in front of the second, ornate fireplace near the incredible vintage bar, offering a sophisticated setting for relaxation or friendly gatherings. With a total of seven bathrooms plus two additional toilets, multiple formal and informal living areas provide abundant space for relaxation and entertainment. The expansive kitchen is a culinary haven, perfect for both everyday cooking and catering to larger events. The residence also includes a home-office and a gymnasium, spa and sauna. High ceilings throughout the home further enhance the sense of grandeur and luxury, while several balconies capture the picturesque vistas.

Outdoors, you'll find the beautiful in-ground swimming pool surrounded by resort-like gardens, and separate from the main residence, a set of four-lot sandstone stables and a four-car garage offer ample storage and accommodation for vehicles and equestrian enthusiasts. Additionally, an external building houses a commercial-grade kitchen, an igloo, and a watering system, presenting exciting possibilities for hosting events or pursuing creative endeavours.

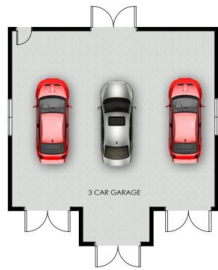
This breathtaking property also includes DA Approvals for a second dwelling, a large shed and an Equestrian Centre with access directly from Remembrance Driveway.

Other features:

- Ultra-private location with security gates
- Bitumen driveway
- Ducted air conditioning
- Cattle yards and approx. 2,000 kg weighing scales
- 2x approx. 100,000 L water tanks
- 24 mega-litre water licence
- New bore
- New approx. 375,000 L water tank
- Machinery shed
- Hay shed
- Wine storage under staircase
- Bird aviary
- Attic room

* Please note that all webpage enquiries require a contact number AND an email address. Enquiries that do not have this information will not receive a response.

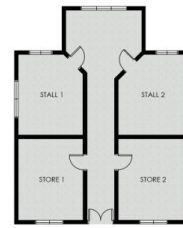
Photo identification must be presented to the agent by all parties prior to inspections. All care has been taken in providing accurate information in this advertisement. However, prospective purchasers are to rely on their own enquiries



Garage



Studio



Stables



Ground Floor



Second Floor



115 Mount View Close, Razorback

Floor plans and site plans are for illustrative purposes only. They are not part of any legal document or title and are subject to errors, omission, and inaccuracies. Whilst every attempt has been made to ensure the accuracy of this plan, measurements of doors, windows, rooms, cupboards etc are approximate only.



115 Mount View Close, Razorback

