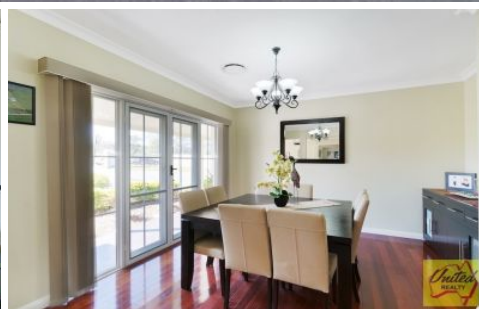




Uniting people with property... since 1986



146 Burley Road Horsley Park NSW

4 2 5

Price : \$ 1,800,000

Land Size : 2.47 Acres

View : <https://www.acreagesales.com.au/3292905>



Tanya Novek
0423426454

Prestigious Home on Glorious Approx. 2 and a Half Acres

The essence of country living, this luxurious single story residence provides a haven of family comfort and superb year-round entertaining facilities in a wonderfully private position of Horsley Park. Set on approx. 2 and a half acres (approx. 1 Ha) of flat land, capturing a picturesque leafy outlook and natural flowing creek surrounded by tranquil landscaped gardens.

Built by Wincrest Homes; this impressive residence exudes lifestyle, space, luxury and comfort.

- Four generous sized bedrooms, 3 have triple built-in wardrobes and the master bedroom has a walk-in robe
- Master bedroom has large ensuite bathroom with separate toilet, dual vanity, sunken spa and shower
- Home office/study
- Open plan kitchen overlooking dining and family room, Caesar stone bench tops, integrated microwave, 900mm gas cook top oven and walk-in pantry
- Formal lounge room and formal dining area
- Theatre room
- Main bathroom with sunken bath, separate shower and toilet
- Large laundry with external access and linen cupboard
- Ducted air conditioning and ceiling fans in bedrooms
- Ducted vacuum
- Large undercover entertainment area
- In-ground salt water swimming pool with water feature
- Triple garage with internal access
- Electric gates and intercom
- Access to the back for machinery, and good fencing
- Large Colour-bond shed with toilet

Photo identification must be presented to the agent by all parties prior to inspections. All care has been taken in providing accurate information in this advertisement. However, prospect purchasers are to rely on their own enquiries.