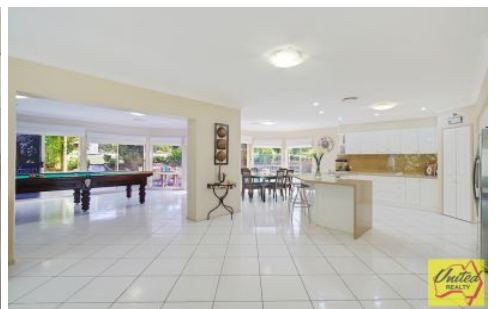




Uniting people with property... since 1986



13 Baldwin Close Ellis Lane NSW

4 3 5

Land Size : 4018 sqm

View : <https://www.acreagesales.com.au/3253247>



Tanya Novek
0423426454

Magnificent Family Home on Approx. 1 Acre, Serene Outlook

Nestled beautifully in a quiet location of prestigious Ellis Lane is this magnificent double story residence perfectly positioned with an amazing rural outlook.

Offering the best living imaginable; its graced with an abundance of accommodation and entertainment space, and idyllic established gardens set on approx. 1 acre of land.

Close to major developments and centrally located, you're just a stone's throw away from the historic town of Camden with plenty of cafes, pubs and trendy restaurants, and with public transport and school buses available.

Features:

- 4 large bedrooms with carpet
- Built-in wardrobes to 3 bedrooms
- Master bedroom has large ensuite with spa bath and walk-in robe
- 3 bathrooms
- Powder room
- Modern kitchen, Caesar stone bench tops and walk-in pantry overlooking dining/meals area
- Great floor plan offering multiple living areas including upstairs living that captures a beautiful serene rural outlook
- Alarm system
- Intercom
- Triple garage
- Double Carport
- Ducted air
- Undercover outdoor family entertainment area
- In-ground swimming pool
- Sheds
- Solar hot water panels
- Landscaped gardens and fruit trees
- Electric entry gate

Photo identification must be presented to the agent by all parties prior to inspections. All care has been taken in providing accurate information in this advertisement. However, prospect purchasers are to rely on their own enquiries.