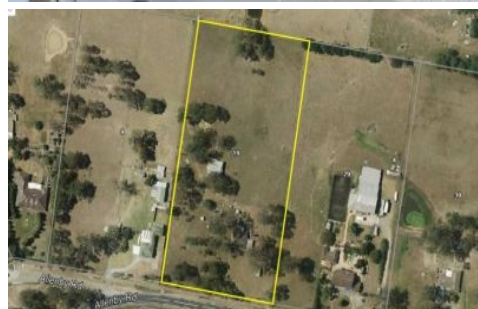




Uniting people with property... since 1986



**19 Allenby Road Rossmore NSW**

**3** **1**

**Price** : \$ 2,300,000

**Land Size** : 5 Acres

**View** : <https://www.acreagesales.com.au/2951689>



**Charlie Cini**  
**0404018222**

## 5 Acres of Pure Potential

Invest in your future with this approx. 5 acres (approx. 2.02 Ha) of elevated, cleared and flat land situated within the South-West Growth Centre. This property is within close proximity to major development in surrounding suburbs such as Leppington and Austral and a stone's throw from Leppington Train Station, the approved Badgerys Creek Airport and proposed Rossmore Train Station.

This immaculate parcel of land boasts a fully renovated, modern home with 3 spacious bedrooms with built-ins to all, tiled flooring throughout, large modern kitchen with gorgeous stone benchtops, breakfast bar and stainless steel appliances. Featuring an open plan dining off the kitchen and a large living area with combustion fire place for those colder winter months. Boasting a beautiful modern bathroom featuring floor to ceiling tiles, split system air-conditioning, plantation shutters and downlights for that extra touch of class.

The exterior of the property features a spacious under cover entertaining area complete with renovated outdoor toilet, huge external laundry, triple car port and fully fenced horse paddocks.

This property is in a prime location with phenomenal potential!

Photo identification must be presented to the agent by all parties prior to inspections. All care has been taken in providing accurate information in this advertisement. However, prospect purchasers are to rely on their own enquiries.